



Caledonian

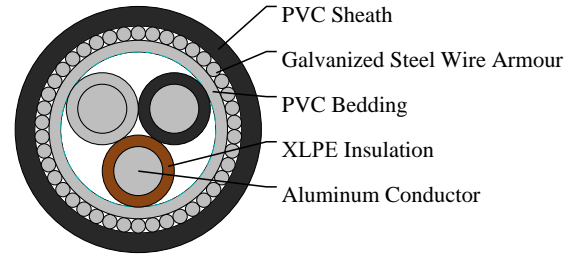
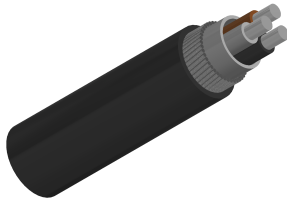
BS 5467 Cables

www.caledonian-cables.com

marketing@caledonian-cables.com

BS 5467 Armoured Power Cables, 1900/3300V

Three-core 1900/3300V cables with solid aluminum conductors
3C16



APPLICATIONS

These cables are used for power and control circuits, they can offer excellent protection through the use of a heavy galvanized steel wire armour. The GSWA makes them suitable for use inside and outside buildings or for direct burial in the ground.

STANDARDS

BS 5467

FIRE PERFORMANCE

Flame retardant	IEC60332 part 1, BS4066 part 1
-----------------	--------------------------------

VOLTAGE RATING

1900/3300V

CABLE CONSTRUCTION

Conductor: Solid Aluminum conductor, circular, Class 1 to BS EN60228.

Insulation: XLPE (Cross-Linked Polyethylene) Type GP 8 conforming to BS 7655-1.3 or type GP6 conforming to BS 7655-1.2.

Bedding: The bedding shall consist of an extruded layer of polymeric material consistent with the operating temperature of the cable.

Armour: SWA (Galvanized steel Wire Armour)

Outer Sheath: Extruded PVC, type 9 specified in BS7655-4.2.

COLOUR CODE

Insulation Colour: Brown, Black, Grey

PHYSICAL AND THERMAL PROPERTIES

Temperature rating: 0°C to +90°C

Bending radius:

1.5mm² to 16mm²: 6 x overall diameter



Caledonian

BS 5467 Cables

www.caledonian-cables.com

marketing@caledonian-cables.com

25mm² and above: 8 x overall diameter

DIMENSION AND PARAMETERS

No. of Cores × Cross- sectional Area	Nominal Insulation Thickness	Nominal Bedding Thickness	Nominal Sheath Thickness	Nominal Steel Wire Armour Diameter	Approx. Overall Diameter	Approx. Weight
No. × mm ²	mm	mm	mm	mm	mm	kg/km
3x16	2	1	1.8	1.6	27.9	1540